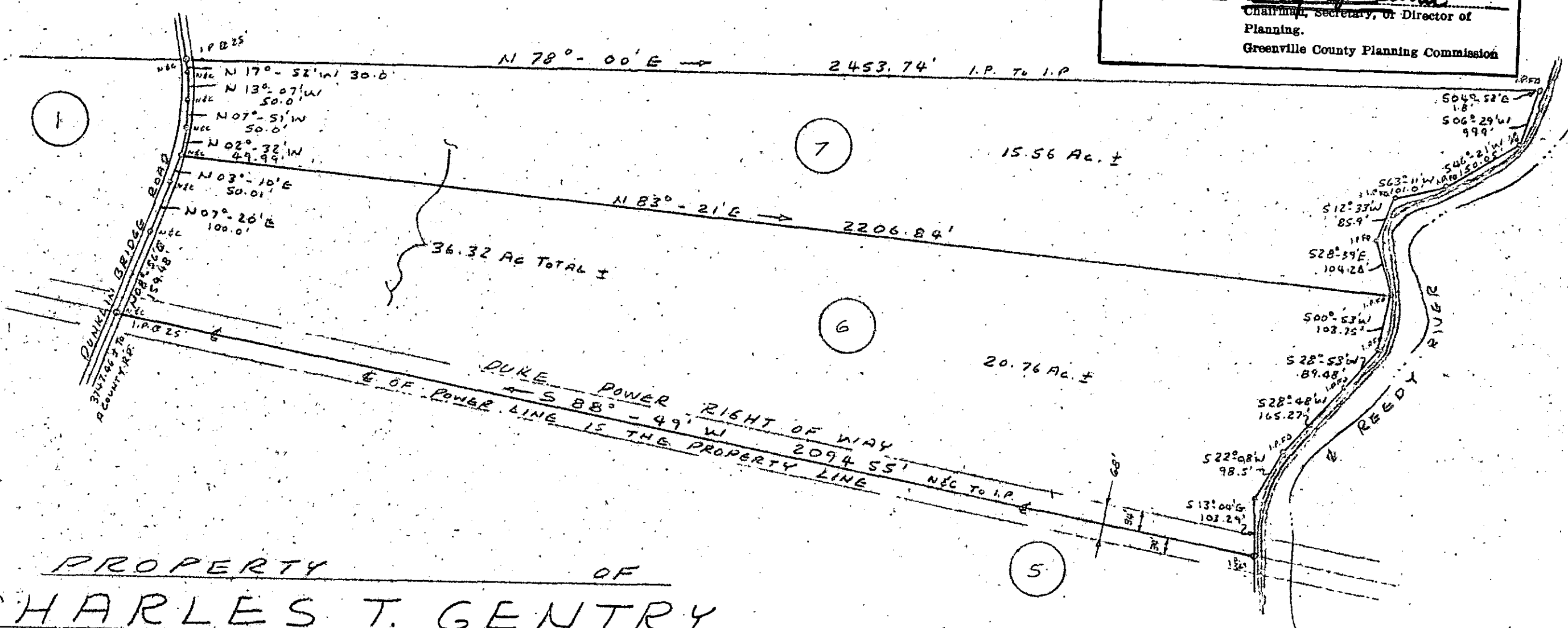


THIS PLAT IS NOT A SUBDIVISION
 AS DEFINED BY THE GREENVILLE
 COUNTY SUBDIVISION REGULATIONS.
 12/3/80 *Percy J. Cate*
 Chairman, Secretary, or Director of
 Planning.
 Greenville County Planning Commission

N/F ALVERSON



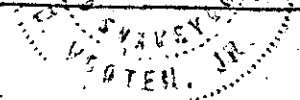
PROPERTY OF
CHARLES T. GENTRY
 NEAR WAREPLACE, GREENVILLE CO., S. C.
 NOV. 23, 1980 SCALE: 1" = 200'

16817

SURVEYED BY: RICHARD D. WOOTEN, JR. R.L.S.

Richard D. Wooten, Jr.

S.C.R.S. No. 4678



FILED
 GREENVILLE CO. S.C.
 DEC 3 2 02 PM '80
 DONNE S. TANKERSLEY
 R.M.C.

8-F-83 ✓

DEC 3 1980

GCTO --- 3 DE 3 80 738

5.00CI

MICROFILMED